



# DESIGNER DATA SHEET

CI/sfb (4-) Sg3

Card 1 of 1

July 2006

1



## VETRO MOSAIC

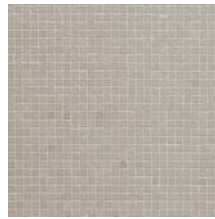
50 x 210



bianco plain



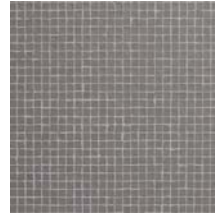
avorio plain



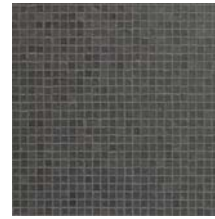
silver plain



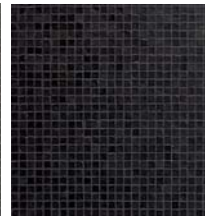
tortora plain



cemento plain



moka plain



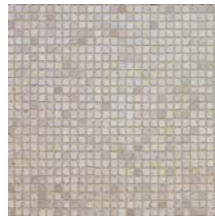
carbone plain



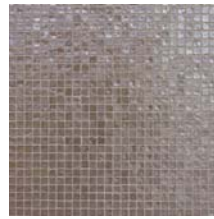
bianco lux



avorio lux



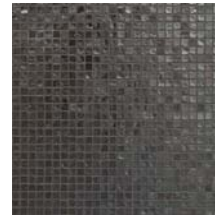
silver lux



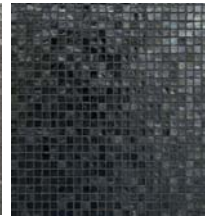
tortora lux



cemento lux



moka lux



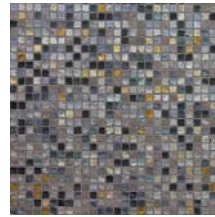
carbone lux



melange  
chiaro



melange  
medio



melange  
scuro

\*melange colours are a blend of both lux and plain finish

world's end tiles



## PRODUCT DATA

Availability:	2 - 3 weeks
Suitability:	Subject to application
Displayed:	Battersea & Tile Studio
Anti-Slip:	N/A
Service:	Samples on request
Pricing:	On request

### Downloads:

To download this and other images visit our website  
[www.worldsendtiles.co.uk](http://www.worldsendtiles.co.uk)

## world's end tiles

Silverthorne Road  
Battersea  
London  
SW8 3HE

Tel: 020 7819 2100  
Fax: 020 7819 2101

Tile Studio  
216 Great Portland Street  
London  
W1W 5QW

Tel: 020 7554 9700  
Fax: 020 7554 9701